



East Pilbara Exploration Team Offices & Core Facility Selection and Definition Phase Studies

Client

BHP Billiton Iron Ore Limited

Project Location

Whaleback Mine Site in Newman, Western Australia.

Value

\$25 Million

Project Summary

Engenium was commissioned by BHPBIO to work on a non-process infrastructure project involving the construction of new offices, core logging and storage facilities for their exploration team.

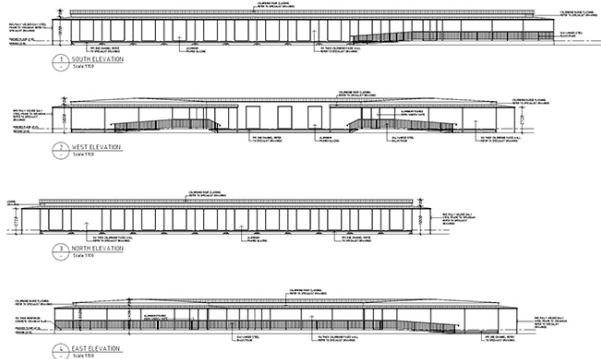
The complete facility measures 530 x 75 metres and includes two separate office buildings, the main office complex suitable for 79 employees and the core shed office suitable for 10 employees. The new core storage and logging facilities will improve safety measures by reducing the risk of forklifts and pedestrians coming into contact, compared to the existing facility.

The main office complex is a modular construction comprised of 34 floors (40 x 45 metres). Then three smaller buildings; core shed offices over three floors, single floored ablution block and separate ice-room. There are 3 sheds that comprise the core facility pulp shed (30 x 24 m), consumable shed (20 x 10 m) and core shed (60 x 16 m).

Design of the facility had to tie in with the adjacent Newman warehouse expansion. Engenium was involved in all aspects of the planning and design stages including; architectural, mechanical, structural, electrical and communications.

Want To Know More?

For more information please contact our Perth office on +61 (0)8 6460 0300, email info@engenium.com.au, or visit our website www.engenium.com.au.



Delivering Value. Delivering Results.